

ANALYZING AND VISUALIZING DATA WITH POWER BI

Overview

Who am I?

Lo Chi Wing, Peter



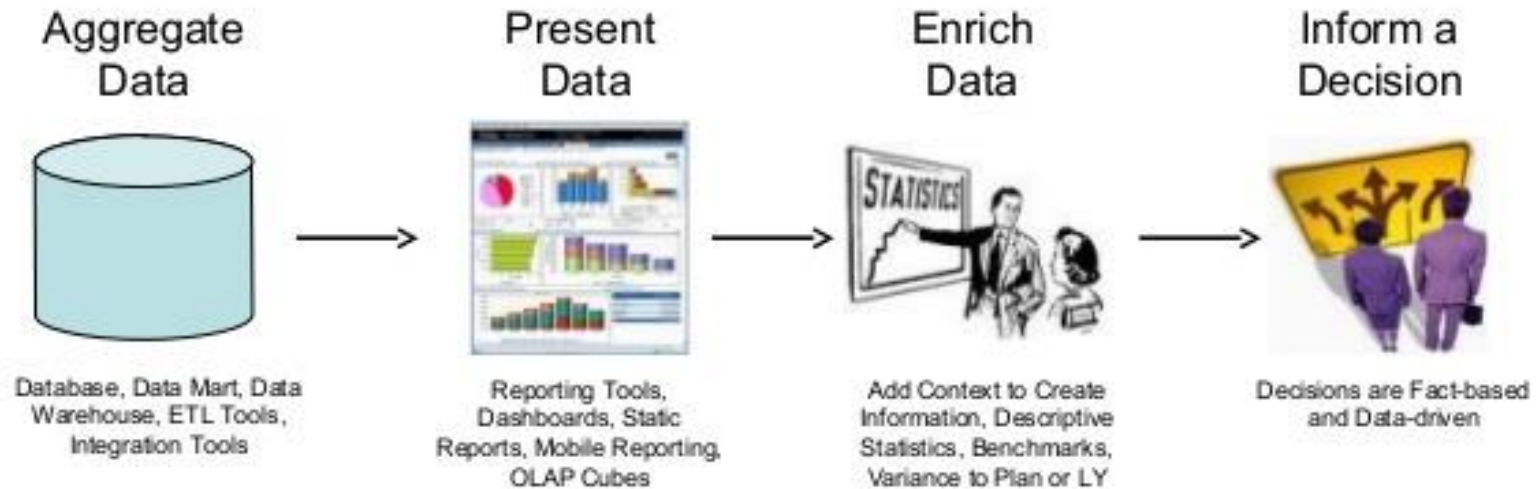
- **Email:** Peter@Peter-Lo.com
- **Facebook:** <http://www.facebook.com/PeterLo111>

Where can you find the material?

- Workshop Notes and Exercises
 - <http://www.Peter-Lo.com/Teaching/AMA-BI/>
- Microsoft Power BI Main Page
 - <http://www.PowerBI.com>

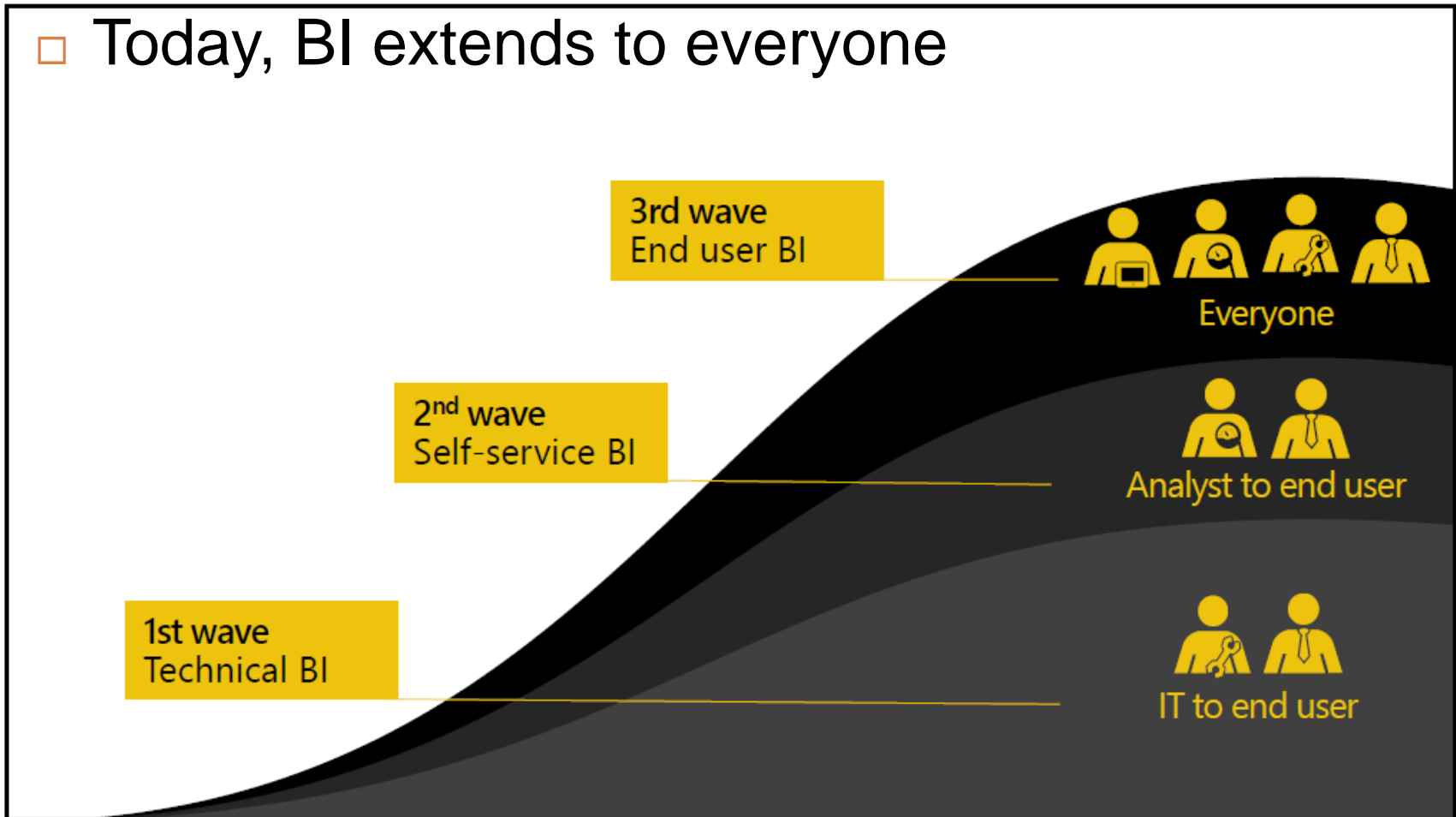
What is Business Intelligence?

- Business Intelligence (BI) enables the business to make intelligent, fact-based decisions



A New Generation of BI

- Today, BI extends to everyone



Common BI challenges

- Turning data into business insights is challenging, common challenges includes:



End-to-end view

Data often resides in disparate locations, making it difficult to see a complete picture of your business



Multiple data sources

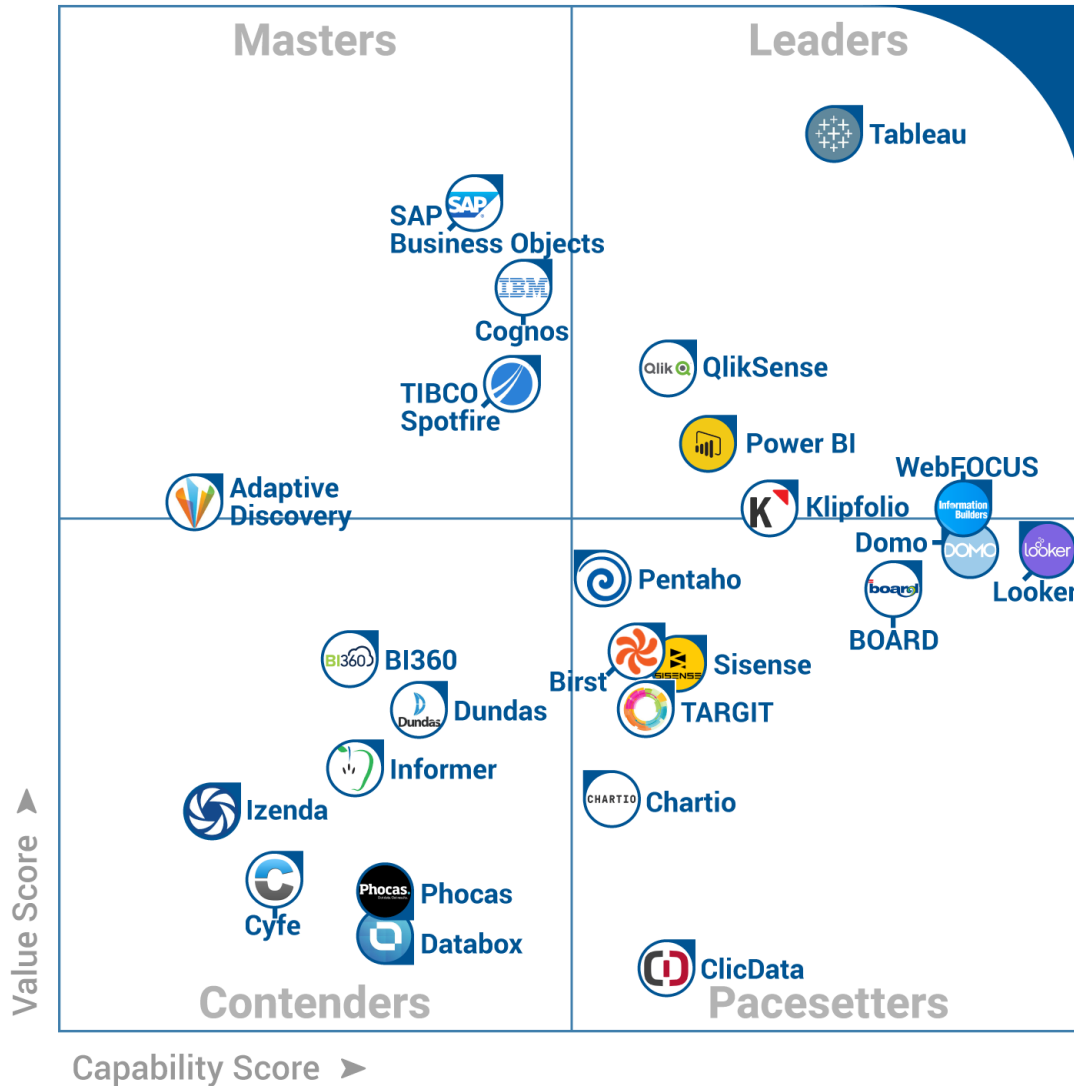
Data residing in SaaS solutions, and other external locations, is difficult to access and refresh securely



Right data for the right users at the right time

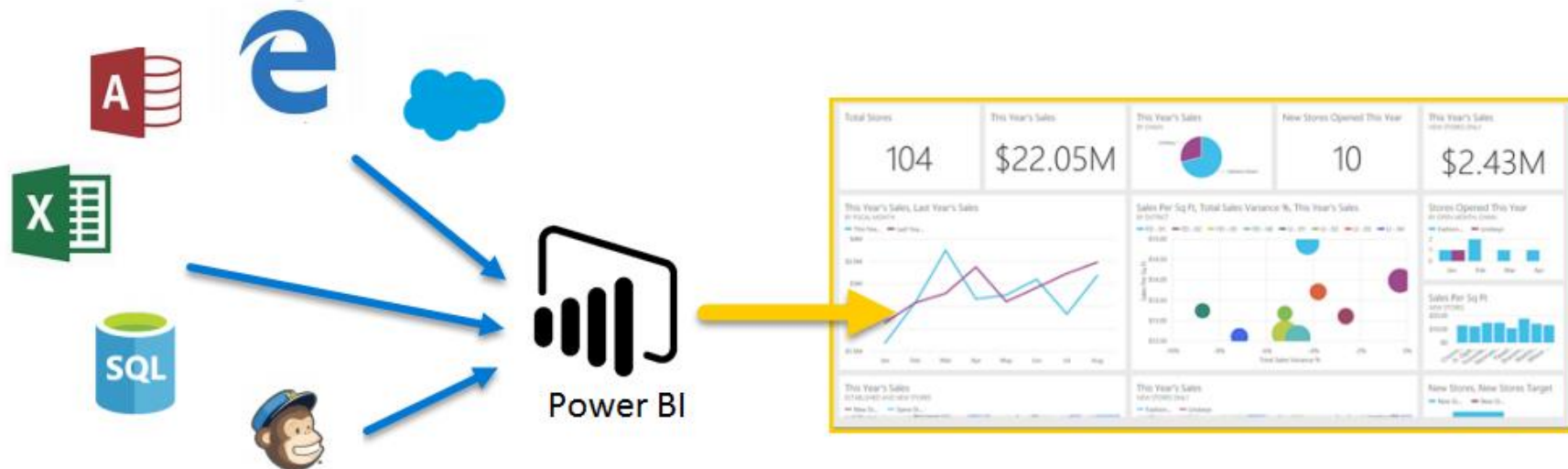
Different roles have different needs, and business users need the latest operational data

Most Popular BI Tools



What is Microsoft Power BI?

- Microsoft Power BI is a collection of software services, apps, and connectors that work together to turn your unrelated sources of data into coherent, visually immersive, and interactive insights.



Power BI Overview



Power BI Overview



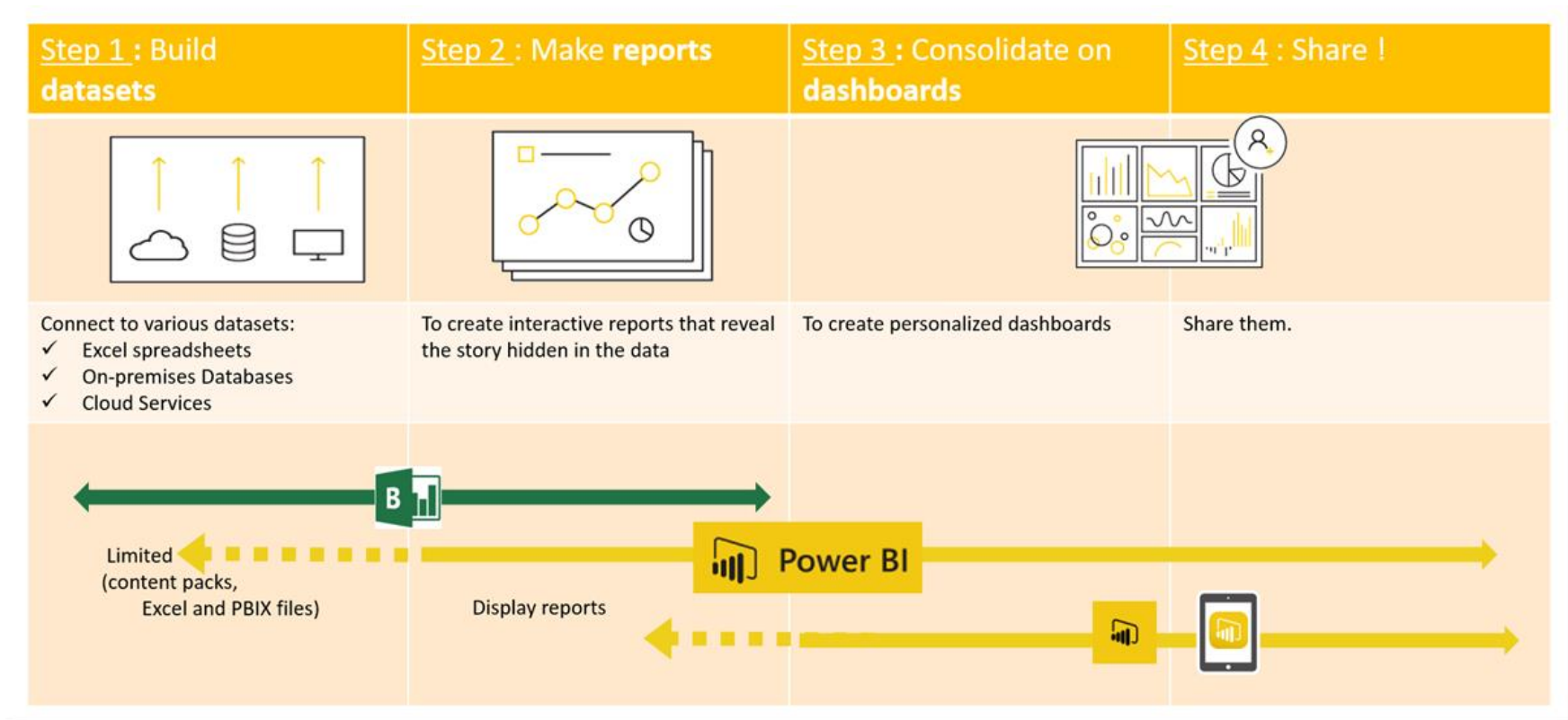
Power BI Desktop



Power BI REST APIs

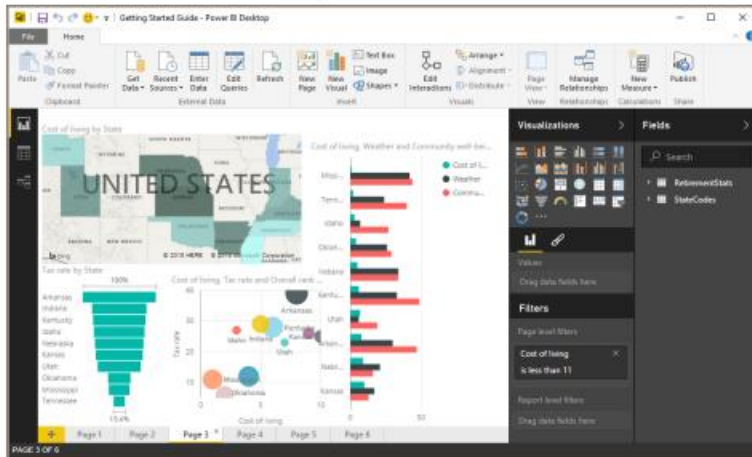


Microsoft Power BI vs. Microsoft Excel

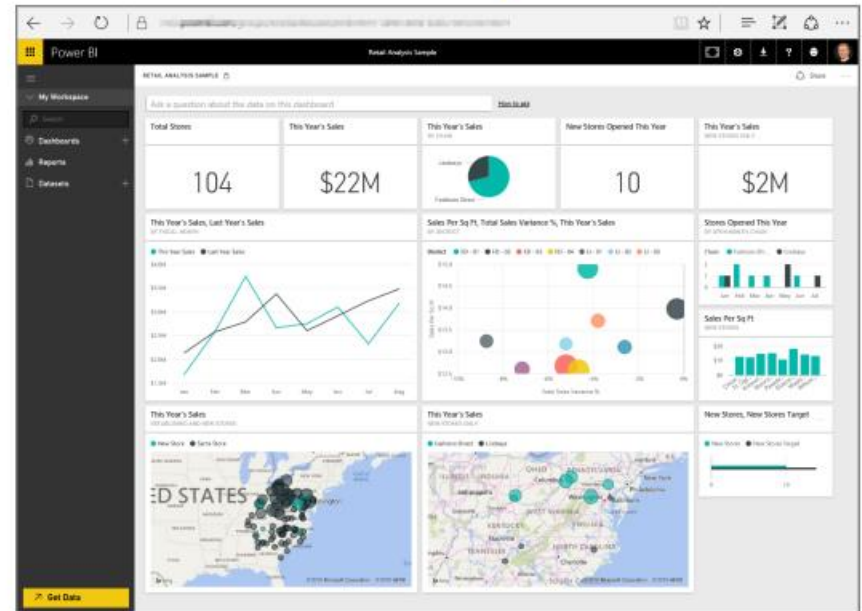


Power BI Component

Power BI Desktop



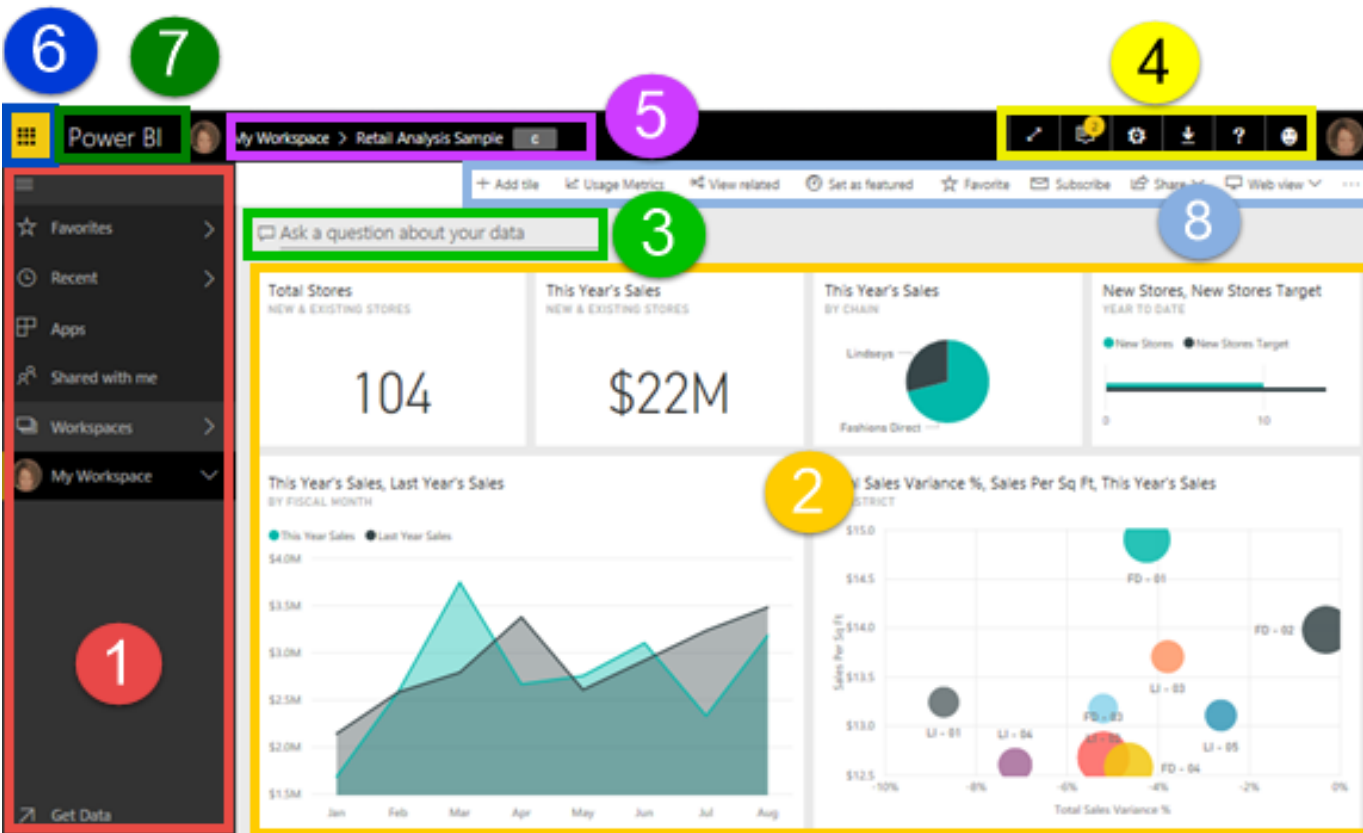
Power BI service



Power BI Mobile



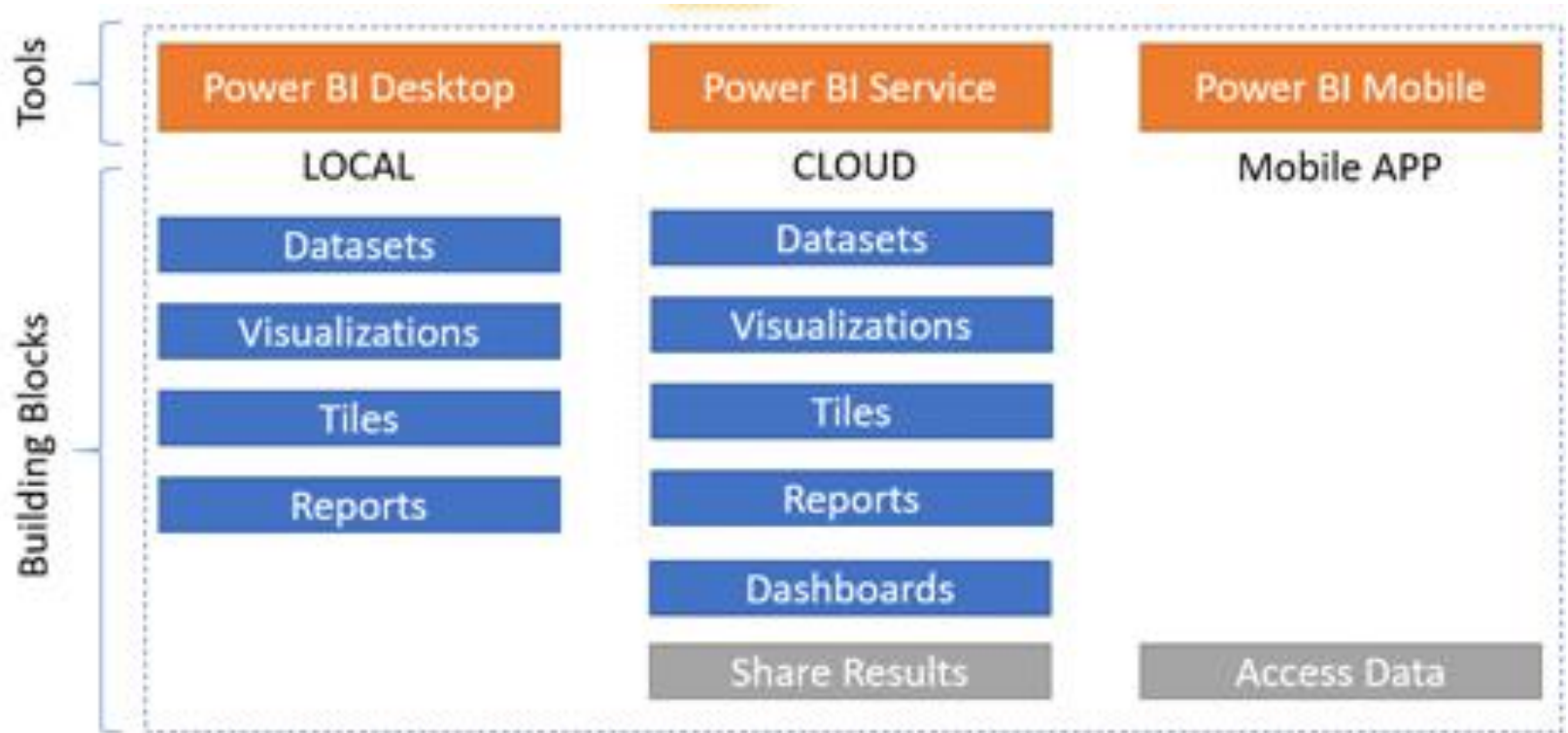
Power BI Service User Interface



- ① Navigation pane
- ② Canvas
- ③ Question & Answer box
- ④ Icon buttons, including help and feedback
- ⑤ Dashboard title
- ⑥ Office app launcher
- ⑦ Power BI home
- ⑧ Icon buttons

Building Blocks of Power BI

- Everything you do in Power BI can be broken down into a few basic building blocks



Power BI Implementation Process

