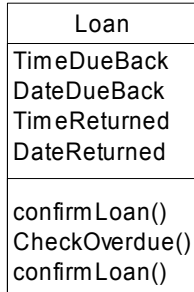
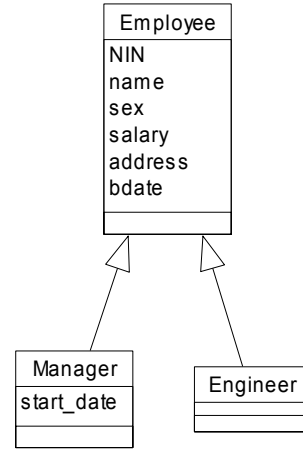


Summary of UML notation.

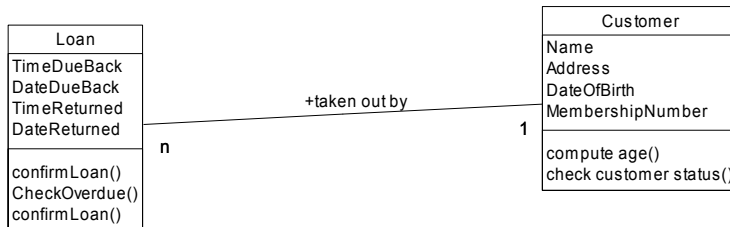
Class with attributes and operations.



Gen-Spec

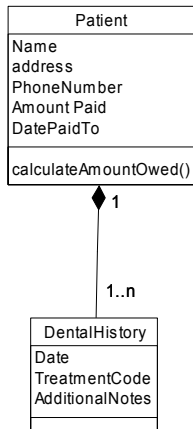


Association with cardinalities

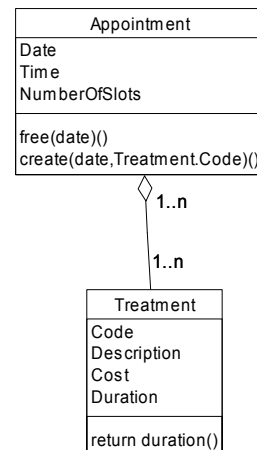


Whole-Part (with cardinalities)

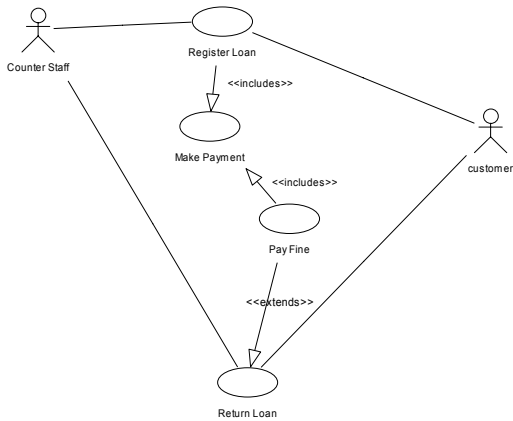
(a) Composition (Strongly-owned)



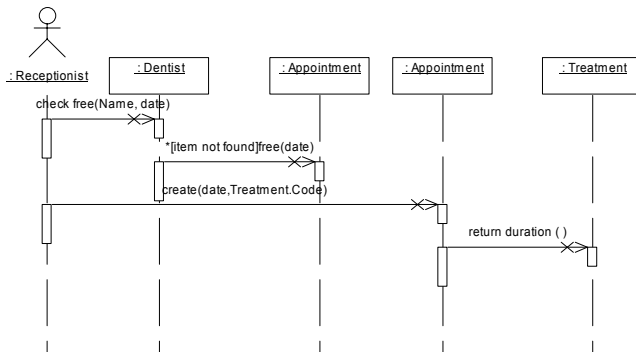
(b) Aggregation (non-strongly owned)



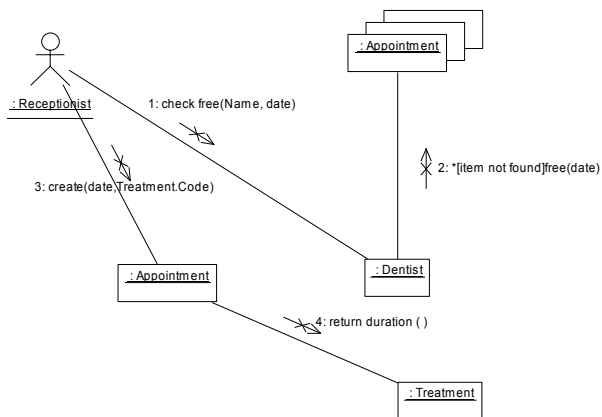
Use Case Diagram



Sequence diagram



Collaboration diagram



Types of message used in sequence and collaboration diagrams.



Synchronous



Asynchronous



Simple