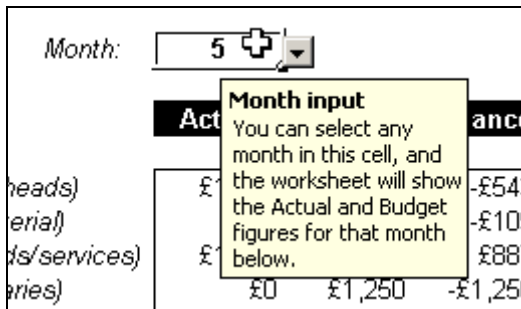
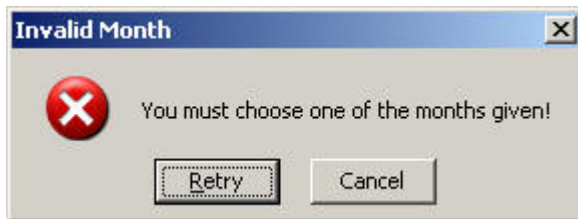


Exercise 2

- Download the exercise files from <http://www.peter-lo.com/Teaching/CS08204/Exercise2.zip>, and open the Excel file “Question 2-1.xls”.
 - Apply validation to cell B2 so that when you click on the cell you see an input message telling you what you can do



- Extend your validation so that when a user chooses a month which doesn't exist, they see this message.



- Download the exercise files from <http://www.peter-lo.com/Teaching/CS08204/Exercise2.zip>, and open the Excel file “Question 2-2.xls” which contains the data for the record sales of the East Store and West Store. You are required to create a summary report by consolidating the sales from both East Store and West Store, the expected result is as followed:

Record Sales: Combined Sales

| | Q1 | Q2 | Q3 | Q4 | Annual |
|-------------------|-------|-------|-------|-------|--------|
| Pop | 408 | 457 | 340 | 599 | 1,804 |
| Soul | 319 | 308 | 379 | 554 | 1,560 |
| R&B | 477 | 415 | 641 | 778 | 2,311 |
| Country | 546 | 571 | 600 | 936 | 2,653 |
| Classical | 57 | 73 | 30 | 152 | 312 |
| Soundtrack | 117 | 159 | 222 | 287 | 785 |
| Children | 46 | 35 | 35 | 101 | 217 |
| TOTAL | 1,970 | 2,018 | 2,247 | 3,407 | 9,642 |

3. Download the exercise files from <http://www.peter-lo.com/Teaching/CS08204/Exercise2.zip>, and open the Excel file “Question 2-3.xls”. There are 4 records for the salesman.

A) Filter the record for Sales greater than the average of total Sales in the data range, the expected result is shown below.

| Type | Salesperson | Sales |
|-----------|-------------|------------|
| Beverages | Suyama | \$5,122.00 |
| produce | Buchanan | \$6,328.00 |
| Produce | Davolio | \$6,544.00 |

B) Filter the record for Type = “Produce”.

| Type | Salesperson | Sales |
|---------|-------------|------------|
| Produce | Davolio | \$6,544.00 |