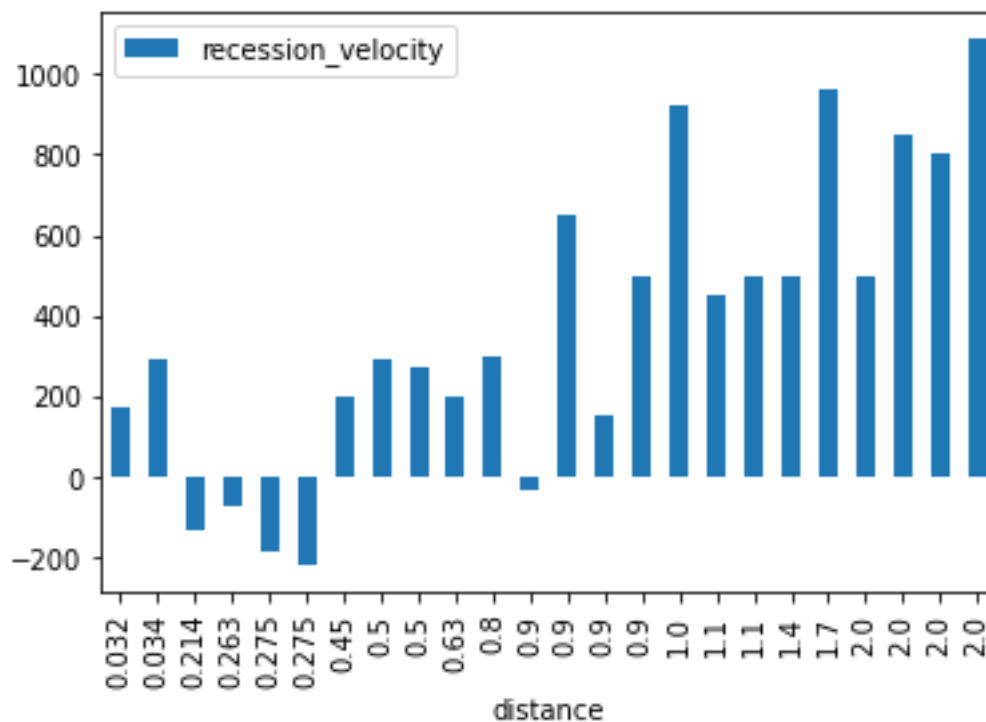
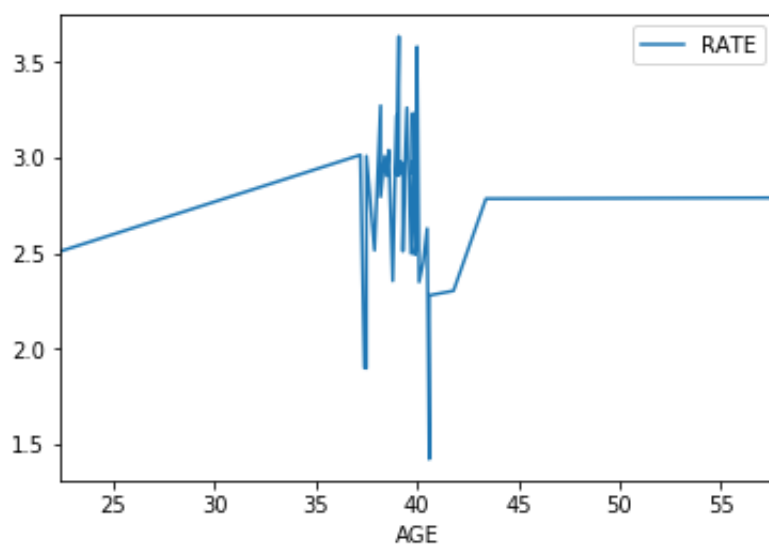


## Exercise 13

1. By using the data file “hubble\_data.csv” from Hubble Space Telescope, create the column chart for showing the relationship between recession velocity and distance.

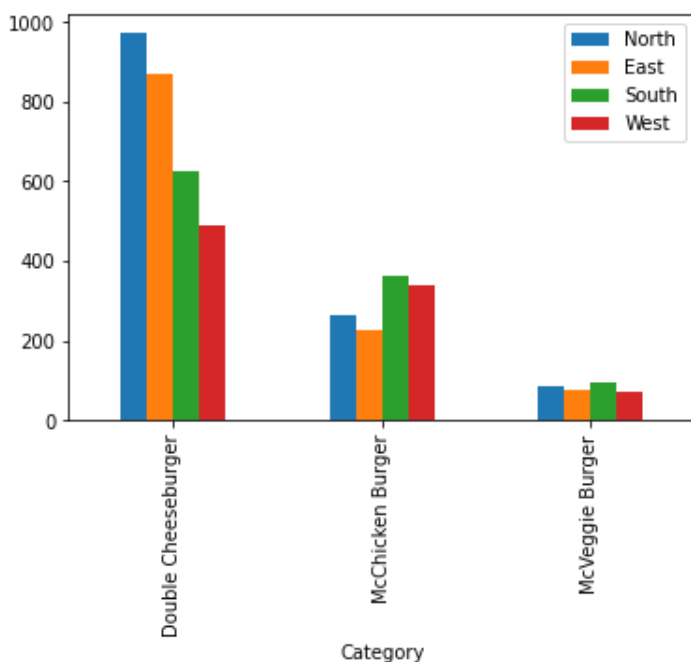


2. By analysis the file “wages\_hours.txt”. create a line chart to find out the relationship between wages and age.



3. Open the Excel file “AverageSales.xlsx”.

A) Create a basic column chart comparing burger sales across regions.



B) Add the “Total” column by sum the sales from all region. Then chart the **Total** column as a line chart against a separate axis.

